

Effective OCTOBER 14, 2013

*New Service!*  
Norfolk, Virginia

# VIRGINIA SERVICE

*connecting*  
**the NORTHEAST and MID-ATLANTIC**

.....

**BOSTON - NEW YORK - WASHINGTON DC**  
**CHARLOTTESVILLE - LYNCHBURG - RICHMOND**  
**NEWPORT NEWS - NORFOLK**  
*and intermediate stations*



**THIS TIMETABLE SHOWS ALL AMTRAK THROUGH SERVICE TO STATIONS  
BETWEEN BOSTON, MA AND LYNCHBURG, VA OR  
NEWPORT NEWS AND NORFOLK, VA**

*Also see timetable Form W2 or Form W4  
for complete Boston to New York and Washington DC schedules.*



NRPC Form W6-Internet Only-10/14/13RRRRR

Schedules subject to change without notice. Amtrak is a registered service mark of the National Railroad Passenger Corp. **National Railroad Passenger Corporation** Washington Union Station, 60 Massachusetts Ave. N.E., Washington, DC 20002.

*Enjoy the journey.®*

Call 1-800-USA-RAIL

Visit AMTRAK.COM





### Service on Northeast Regional<sup>SM</sup>

- Ⓡ All-reserved train, reservations required.
- Ⓡ Business class service available. Complimentary beverage and newspaper on Northeast Regional.
- 🍽 Sandwiches, snacks and beverages.
- 🚪 Amtrak Quiet Car.
- 🧳 Checked baggage at select stations.
- 📶 Wi-Fi available.
- 🕒 On Saturdays, change at New York to Train 168; on Sundays, change at New York to Train 132.
- 🕒 On Saturdays, change at New York to Train 146; on Sundays, change at Washington to Train 132, thence at New Haven to Train 432.
- 🕒 Van/Car service available from Kingston, RI station to Newport, RI. Reservations required. Call (401) 295-1100 for information and reservations.
- 🕒 Seasonal shuttle service from Kingston, R.I. train station to Quonset Point, R.I. Operated by Martha's Vineyard Fast Ferry. Reservations required. Call (401) 295-4040 or visit [www.vineyardfastferry.com](http://www.vineyardfastferry.com) for information and reservations.
- \* On 1/18/14, Train 82 operates Washington to Boston only.
- \*\* On 12/26/13 and 1/2/14, Train 84 operates Washington to Boston only.

Smoking is prohibited.

### Service on the Cardinal<sup>SM</sup>

- Ⓡ **Coaches: Reservations required.**
- 🚪 **Sleeping cars:** Viewliner sleeping accommodations.  
- Amtrak Metropolitan Lounge/ClubAcela available in New York, Philadelphia, Washington and Chicago, for Sleeping car passengers.
- 🍽 **Dining:** Combined Diner/Lounge provides food and beverage service.
- 🧳 Checked baggage at select stations.

Smoking is prohibited.

The Collis P. Huntington Railroad Historical Society (CPH) narrators provide historical and sightseeing commentary on select Cardinal trips eastbound from Charleston, West Virginia to Clifton Forge, Virginia.

### Service on the Carolinian<sup>SM</sup>

- Ⓡ **Coaches: Reservations required.**
- Ⓡ **Business class:** Non-alcoholic beverages, newspaper and pillow included in your ticket price.
- 🍽 **Dinette:** Sandwiches, snacks and beverages.
- 🧳 Checked baggage at select stations.
- 📶 Wi-Fi available.
- 🕒 On Saturdays and Sundays, Train 80 arrives New York at 8:49 p.m.

Smoking is prohibited.

The state-subsidized Carolinian are primarily financed through funds

Shading Key		
Northeast Regional	Long-distance train	Thruway and connecting services
Connecting Shuttle	Connecting train	

from the North Carolina Department of Transportation.

### Service on the Crescent<sup>®</sup>

- Ⓡ **Coaches: Reservations required.**
- 🚪 **Sleeping cars:** Viewliner sleeping accommodations.  
- Amtrak ClubAcela First class Lounge available in New York, Philadelphia and Washington, and the Magnolia Room in New Orleans.
- 🍽 **Dining:** Full meal service.
- 🍽 **Lounge:** Sandwiches, snacks and beverages.
- 🧳 Checked baggage at select stations.
- 🕒 On Saturdays and Sundays, Train 20 arrives New York at 1:48 p.m.

Smoking is prohibited.

### Service on the Palmetto<sup>®</sup>

- Ⓡ **Coaches: Reservations required.**
- Ⓡ **Business class:** Complimentary non-alcoholic beverages, newspaper and priority boarding offered between New York and Savannah.
- 🍽 **Lounge car:** Sandwiches, snacks and beverages.
- 🧳 Checked baggage at select stations.
- 📶 Wi-Fi available.

Smoking is prohibited.

### Service on the Silver Meteor<sup>®</sup> and the Silver Star<sup>®</sup>

- Ⓡ **Coaches: Reservations required.**
- 🚪 **Sleeping cars:**  
- Viewliner sleeping accommodations.  
- Amtrak ClubAcela available in New York, Philadelphia and Washington.
- 🍽 **Dining:** Full meal service.
- 🍽 **Lounge:** Cafe with table seating; Sandwiches, snacks and beverages.
- 🧳 Checked baggage at select stations.
- 🕒 On Saturdays and Sundays, Train 98 arrives New York at 11:29 a.m.
- 🕒 On Saturdays and Sundays, Train 92 arrives New York at 7:32 p.m.

Smoking is prohibited.

Service within Virginia on Trains 71, 88, 125, 145, 147, 156, 157, 164, 171, 174 and 176 is primarily financed as a state partnership through funds made available by the Virginia Department of Rail and Public Transportation.

For additional information about schedules and services, visit [Amtrak.com](http://Amtrak.com) or call 1-800-USA-RAIL.

#### Connecting Local Services

**Smart Way Connector**  
Shuttle bus service between Roanoke and Lynchburg is now available, with free parking at Roanoke Civic Center, \$4 fares payable on board, and schedules synchronized with trains at Lynchburg. Call (540) 982-2222 or visit [www.smartwaybus.com](http://www.smartwaybus.com) for information.

## BOSTON and VIRGINIA ROUTE MAP and SYMBOLS

**Legend:**

- A** Time Symbol for A.M.
- N** Time Symbol for Noon.
- P** Time Symbol for P.M.
- D** Stops only to discharge passengers; train may leave before time shown.
- L** Stops to receive and discharge passengers; train may leave before time shown.
- R** Stops only to receive passengers.
- Bus** Bus stop
- ✈** Airport connection
- QT** Quik-Trak self-serve ticketing kiosk
- Unstaffed station
- Staffed ticket office; may or may not be open for all train departures
- ♿ Station wheelchair accessible; no barriers between station and train
- 🚪 Station wheelchair accessible; not all station facilities accessible

### Fall Holidays

Special Thanksgiving Timetables will be issued to cover trains in the Northeast and other areas for the period of November 26 through December 2.

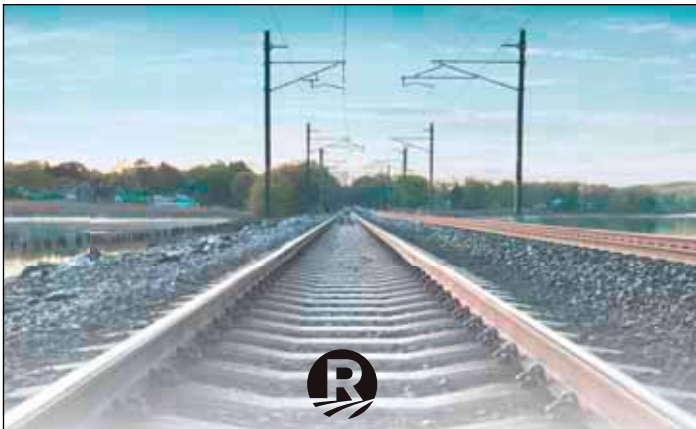
I AM TRAFFIC-FREE

AMTRAK VIRGINIA<sup>SM</sup>

Hassle-free trips to DC, New York and more | [amtrakvirginia.com](http://amtrakvirginia.com)

ALWAYS BY THEIR SIDE

Donate today at [USO.org](http://USO.org)



NORTHEAST  
REGIONAL

## THE BETTER ROUTE ISN'T ON YOUR GPS.

The best way to beat traffic is to avoid it altogether. Even better, you'll save when you book your trip 14 days in advance. As always, our prices are final with no added taxes or fees. Visit [Amtrak.com](http://Amtrak.com)

[AMTRAK.COM](http://AMTRAK.COM)

 **AMTRAK**

*Enjoy the journey.™*

Amtrak, Northeast Regional and Enjoy the journey are service marks of the National Railroad Passenger Corporation.

# I AM NEW IN TOWN



Amtrak Virginia<sup>SM</sup> train service has officially arrived in Norfolk, with traffic-free rides to cities like Richmond, DC, New York, Boston and more, seven days a week! [amtrakvirginia.com](http://amtrakvirginia.com)

 **AMTRAK VIRGINIA**<sup>SM</sup>