

AMTRAK SERVICE IN MICHIGAN

Effective January 22, 2018

WOLVERINE SERVICE® serving CHICAGO - KALAMAZOO - BATTLE CREEK - JACKSON - DETROIT - PONTIAC and intermediate stations

BLUE WATER™ serving CHICAGO - KALAMAZOO - BATTLE CREEK - EAST LANSING - PORT HURON and intermediate stations

PERE MARQUETTE® serving CHICAGO - ST. JOSEPH - HOLLAND - GRAND RAPIDS and intermediate stations

Amtrak.com
1-800-USA-RAIL

| Wolverine Service | Wolverine Service | Blue Water | Wolverine Service | Pere Marquette | Thruway | ◀ Train Name ▶ | Pere Marquette | Wolverine Service | Blue Water | Wolverine Service | Wolverine Service | Thruway | | | | |
|-------------------|-------------------|------------|-------------------|----------------|-----------|-------------------------------|----------------|---|------------|-------------------|-------------------|---------|--------|--------|--------|--------|
| 350 | 352 | 364 | 354 | 370 | 8356 | ◀ Train Number ▶ | 371 | 351 | 365 | 353 | 355 | 8651 | | | | |
| Daily | Daily | Daily | Daily | Daily | Daily | ◀ Normal Days of Operation ▶ | Daily | Daily | Daily | Daily | Daily | Daily | | | | |
| | | | | | | ◀ On Board Service ▶ | | | | | | | | | | |
| 8364/8150 | | | 8354 | | | ◀ Connecting Thruway Number ▶ | | 8465 | | 8353 | 8555 | | | | | |
| Read Down | | | | | | Mile | Symbol | Read Up | | | | | | | | |
| 7 20A | 12 40P | 4 00P | 5 50P | 6 30P | 18 10 35P | 0 | Dp | CHICAGO, IL -Union Station (CT) | ● & QR | Ar | 9 11A | 10 32A | 11 45A | 3 50P | 10 25P | 6 05A |
| 7 46A | | | | | | 16 | ↓ | Hammond-Whiting, IN | ○ & QR | ↑ | | | | L3 03P | L9 37P | ↑ |
| 8 28A | | | 6 53P | | | 52 | ↓ | Michigan City, IN (CT) | ○ | ↑ | | | | | 8 57P | |
| | | | | 9 15P | | 89 | ↓ | St. Joseph-Benton Harbor, MI (ET) | ○ QR | ↑ | 8 16A | | | | | |
| | | | | 9 51P | | 116 | ↓ | Bangor, MI | ○ | ↑ | 7 38A | | | | | |
| | | | | 10 34P | | 151 | ↓ | Holland, MI | ○ & QR | ↑ | 6 54A | | | | | |
| 9 39A | 2 56P | 6 10P | 8 04P | | | 62 | ↓ | New Buffalo, MI | ○ | ↑ | | | 11 24A | 3 09P | 9 47P | |
| 10 04A | 3 17P | 6 32P | 8 24P | | | 89 | ↓ | Niles, MI | ● & QR | ↑ | | | 11 04A | 2 44P | 9 27P | |
| 10 15A | | 6 43P | | | | 102 | ↓ | Dowagiac, MI | ○ | ↑ | | | 10 49A | | 9 14P | |
| 10 47A | 3 51P | 7 11P | 8 58P | | 18 2 45A | 138 | Ar | Kalamazoo, MI | ● & QR | Dp | 9 16A | | | 2 11P | 8 45P | |
| 11 12A | | | 10 00P | | | 176 | Dp | Traverse City, St. Ignace—see back | ○ & QR | Ar | 8 25A | | | | 8 40P | |
| 12 12P | | | 11 00P | 11 39P | | 160 | Ar | GRAND RAPIDS, MI | ○ & QR | Dp | 6 00A | 7 23A | | | 7 43P | |
| 11 13A | 4 17P | 7 38P | 9 24P | | | 208 | Ar | Battle Creek, MI | ● & QR | Dp | 8 51A | | 9 52A | 1 47P | 8 21P | |
| 11 50A | | | | | | 249 | Dp | East Lansing, MI | ○ & QR | Ar | | | 8 45A | 9 40A | 6 00P | |
| 12 25P | | 8 47P | 12 25A | | | 238 | ↓ | Owosso, MI | ○ & QR | ↑ | | | 8 04A | | | |
| 2 10P | | | | | | 256 | ↓ | Durand, MI | ○ & QR | ↑ | | | 8 04A | | | |
| | | 9 24P | | | | 274 | ↓ | Flint, MI | ● & QR | ↑ | | | 7 32A | 7 20A | 3 50P | |
| 3 45P | | 9 55P | 1 25A | | | 274 | ↓ | Lapeer, MI | ○ & QR | ↑ | | | 7 06A | | | |
| | | 10 21P | | | | 319 | Ar | PORT HURON, MI | ● & QR | Dp | | | 6 20A | | | |
| | | 11 31P | | | | 184 | Dp | Albion, MI | ○ & QR | Ar | 8 19A | | | | | |
| 12 06P | 5 10P | | L9 54P | | | 208 | Dp | Jackson, MI | ● & QR | Ar | 7 56A | | | 12 53P | 7 27P | |
| 12 48P | 5 47P | | 10 18P | | | 243 | Dp | Ann Arbor, MI | ● & QR | Ar | 7 20A | | | 12 17P | 6 51P | |
| L1 17P | L6 16P | | 10 55P | | | 271 | Ar | Dearborn, MI | ● & QR | Dp | 6 51A | | | 11 48A | 6 21P | |
| | | | L11 24P | | | 281 | Dp | | ● & QR | Ar | | | 6 33A | | | |
| L1 40P | L6 46P | | L11 54P | | | 292 | ↓ | DETROIT, MI -Amtrak Station | ○ QR | ↑ | | | 6 10A | 11 07A | 5 40P | |
| L2 04P | L7 10P | | L12 18A | | | 296 | ↓ | Royal Oak, MI | ○ | ↑ | | | 6 03A | 10 59A | 5 33P | |
| L2 12P | L7 17P | | L12 25A | | | 304 | Ar | Troy, MI | ○ & QR | Dp | 5 50A | | | 10 45A | 5 20P | |
| 2 39P | 7 45P | | 12 55A | | | | Ar | PONTIAC, MI | ○ & QR | Dp | | | | | | |
| | | | | | | | Ar | Windsor, ON—Greyhound Station | ○ & QR | Dp | | | | | | 11 40P |
| | | | | | | | Ar | London, ON | ○ | Dp | | | | | | 9 15P |
| | | | | | | | Ar | TORONTO, ON -Greyhound Station (ET) | ● & QR | Dp | | | | | | 6 30P |

SCHEDULES EFFECTIVE 1/22/18

Possible Michigan Service Delays

Wolverine and Blue Water schedules may be affected by major ongoing track work being performed between Kalamazoo and Dearborn. Visit Amtrak.com or call 1-800-USA-RAIL to confirm schedules for your anticipated travel period.

SHADING KEY

- Daytime train
- Thruway and connecting services

See page 2 for Services, Route Map and Symbols; and page 3 for Thruway Connections.

AMTRAK SERVICE IN MICHIGAN

WOLVERINE SERVICE®, BLUE WATERSM and PERE MARQUETTE®

Amtrak.com
1-800-USA-RAIL

Service on Wolverine®, Blue WaterSM and Pere Marquette®

- R Coaches: Reservations required.**
- B Business class:** Ticket price includes non-alcoholic beverage and newspaper, and access to the Amtrak Metropolitan Lounge in Chicago.
- Cafe:** Sandwiches, snacks and beverages.
- Wi-Fi available.**
- Amtrak Quiet Car (Monday-Friday only).**
- Bicycles:** A limited number of spaces are available to transport standard bicycles to/from most *Blue Water* and *Pere Marquette* stations. Reservations are required; nominal charges apply; passenger assists with loading and unloading as carry-on baggage on the *Blue Water* and checked trainside on the *Pere Marquette*. Visit Amtrak.com/bikes for more information.
- 18 Greyhound Lines Thruway connection at Chicago Union Station.** Amtrak tickets are sold only when purchasing a connecting or return Amtrak train ticket. Otherwise, buy ticket directly from Greyhound.
- 56 Greyhound Lines Thruway connection at Dearborn.**
- 62 Indian Trails Thruway connection at Battle Creek.**
- 74 Indian Trails Thruway connection at Kalamazoo.** For Thruway connection from Grand Rapids to Trains 350 and 354, and from Train 351 to Grand Rapids, see back.

Golf Bags: A limited number of spaces are available to transport golf bags to/from all stations. Reservations are required; nominal charges apply; passenger assists with loading, stowing and unloading.

All Amtrak services and stations are non-smoking.

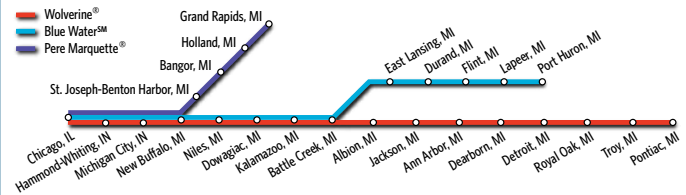
See page 3 for Thruway Connections.

Trails and Rails Program: In cooperation with the National Park Service, volunteer rangers provide on board narratives between May and October on selected days on parts of these routes. Visit nps.gov/trailsandrails and amtrakparks.com.

Possible Michigan Service Delays

Wolverine and *Blue Water* schedules may be affected by major ongoing track work being performed between Kalamazoo and Dearborn. Visit Amtrak.com or call 1-800-USA-RAIL to confirm schedules for your anticipated travel period.

WOLVERINE SERVICE, BLUE WATER and PERE MARQUETTE ROUTE MAP and SYMBOLS



— Wolverine®
— Blue WaterSM
— Pere Marquette®
— Other Amtrak Train Routes

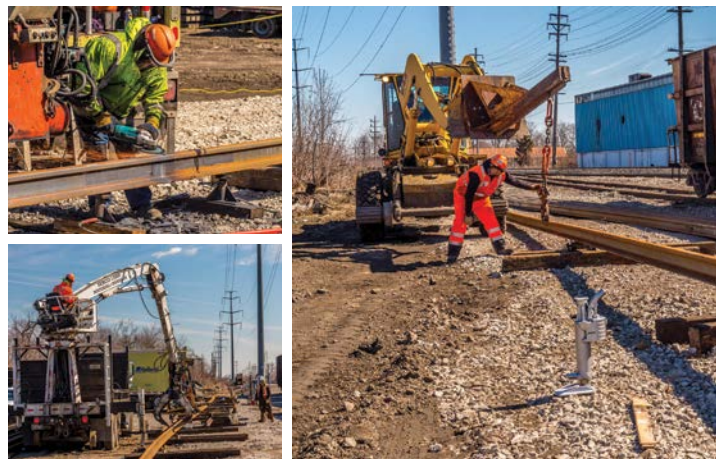
SYMBOLS KEY

- L** Stops to receive and discharge passengers; train may leave before time shown.
- R** Stops only to receive passengers.
- Thruway Bus stop
- Ferry connection
- QT** Quik-Trak self-serve ticketing kiosk
- Unstaffed station
- Staffed Station with ticket office; may or may not be open for all train departures.
- Station wheelchair accessible; no barriers between station and train.
- Station wheelchair accessible; not all station facilities accessible.

The *Wolverine Service*, *Blue Water* and *Pere Marquette* are financed primarily through funds made available by the Michigan State Department of Transportation.



Amtrak and the Michigan Department of Transportation have modified *Wolverine Service* schedules to accommodate track and signal work to result in improved reliability, a smoother ride and an expansion of the Midwest's first 110 mph Amtrak service. Photos courtesy of MDOT.



AMTRAK SERVICE IN MICHIGAN

WOLVERINE SERVICE®, BLUE WATERSM and PERE MARQUETTE®

Amtrak.com
1-800-USA-RAIL

Thruway Connections

Toledo • Detroit • East Lansing (Trinity Transportation)

| 29/49 | | Connecting Train Number | | | | 30/48 | |
|--------|------|-----------------------------------|--------|--------|--|-------|--|
| 6049 | Mile | Thruway Number | Symbol | 6048 | | | |
| 6:30A | 0 | Toledo, OH—Amtrak Station (ET) | ●♿ | 10:35P | | | |
| 7:35A | 61 | Detroit, MI—Amtrak Station | ●♿QR | 9:30P | | | |
| 7:50A | 70 | Dearborn, MI—Amtrak Station | ●♿QR | 9:10P | | | |
| 8:40A | 106 | Ann Arbor, MI—Amtrak Station | ●♿QR | 8:25P | | | |
| 9:25A | 143 | Jackson, MI—Amtrak Station | ●♿QR | 7:40P | | | |
| 10:05A | 182 | East Lansing, MI—Amtrak Sta. (ET) | ●♿QR | 7:00P | | | |

Battle Creek/Kalamazoo • Flint • Saginaw • Bay City • Cheboygan • St. Ignace (Indian Trails)

| 8150 | | 8354 | | Thruway Number | | | | 8353 | | 8555 | |
|--------|--------|------|---------------------|----------------|------|------|-------|------|-------|--------|--|
| Daily | Daily | Mile | Days of Operation | Symbol | 8150 | 8354 | 8353 | 8555 | Daily | Daily | |
| | 10:00P | 0 | Kalamazoo, MI (ET) | ●♿QR | Ar | | | | | 8:40P | |
| | 11:00P | 29 | Grand Rapids, MI | ○♿QR | | | | | | 7:30P | |
| 11:50A | | 51 | Battle Creek, MI | ●♿QR | | | 9:40A | | | | |
| 1:25P | 12:25A | 79 | East Lansing, MI | ●♿QR | | | 8:25A | | | 6:00P | |
| 2:10P | | 111 | Owosso, MI | ○♿ | | | | | | | |
| 3:45P | 1:25A | 132 | Flint, MI | ●♿ | | | 7:20A | | | 3:50P | |
| 4:40P | | 163 | Saginaw, MI | ○♿ | | | | | | 2:20P | |
| 5:05P | | 176 | Bay City, MI | ○♿ | | | | | | 1:45P | |
| 6:35P | | 218 | Tawas City, MI | ○♿ | | | | | | 12:10P | |
| 8:38P | | 268 | Alpena, MI | ○♿ | | | | | | 10:20A | |
| 10:14P | | 345 | Cheboygan, MI | ○♿ | | | | | | 8:40A | |
| 10:35P | | 350 | Mackinaw City, MI | ○♿ | | | | | | 8:10A | |
| 10:50P | | 357 | St. Ignace, MI (ET) | ○♿ | Dp | | | | | 7:55A | |

NOTE—Through passengers change buses at Flint, MI on buses 8150 and 8555.

Kalamazoo • Grand Rapids (Indian Trails)

| 8351 | | 8364 | | Thruway Number | | | | 8465 | | 8365 | | 8555 | |
|-------|-------|------|-----------------------|----------------|------|-------|-------|-------|------|-------|-------|-------|--|
| Daily | Daily | Mile | Days of Operation | Symbol | 8351 | 8364 | 8465 | 8365 | 8555 | Daily | Daily | Daily | |
| 8:35A | 2:15P | 0 | Kalamazoo, MI (ET) | ●♿QR | Ar | 9:00A | 5:35P | 8:40P | | | | | |
| 9:40A | 3:10P | 50 | Grand Rapids, MI (ET) | ○♿QR | Dp | 7:23A | 4:33P | 7:30P | | | | | |

Kalamazoo • Traverse City • Sault Ste. Marie (Indian Trails)

| 8364 | | Thruway Number | | | | 8365 | |
|--------|------|--------------------------------|--------|------|--------|-------|--|
| Daily | Mile | Days of Operation | Symbol | 8364 | 8365 | Daily | |
| 2:15P | 0 | Kalamazoo, MI—Amtrak Sta. (ET) | ●♿QR | Ar | 5:35P | | |
| 3:10P | 29 | Grand Rapids, MI | ○♿QR | | 4:30P | | |
| 4:50P | 64 | Rockford, MI | ○♿ | | 3:40P | | |
| 5:18P | 85 | Howard City, MI | ○♿ | | 3:05P | | |
| 5:40P | 106 | Big Rapids, MI | ○♿ | | 2:40P | | |
| 6:25P | 130 | Reed City, MI | ○♿ | | 2:10P | | |
| 7:01P | 147 | Cadillac, MI | ○♿ | | 1:08P | | |
| 7:15P | 176 | Manton, MI | ○♿ | | 12:46P | | |
| 7:40P | 168 | Kingsley, MI | ○♿ | | 12:23P | | |
| 8:15P | 192 | Traverse City, MI | ○♿ | | 11:53A | | |
| 9:22P | 253 | Charlevoix, MI | ○♿ | | 10:38A | | |
| 9:50P | 270 | Petoskey, MI | ○♿ | | 10:00A | | |
| 10:10P | 279 | Alanson, MI | ○♿ | | 9:33A | | |
| 10:18P | 288 | Pellston, MI | ○♿ | | 9:25A | | |
| 10:51P | 305 | Mackinaw City, MI | ○♿ | | 9:00A | | |
| 11:15P | 312 | St. Ignace, MI | ○♿ | | 8:45A | | |
| 12:15A | 363 | Sault Ste. Marie, MI (ET) | ○♿ | Dp | 6:45A | | |

NOTE—Through passengers change buses at the Grand Rapids Bus Station on buses 8364 and 8365.

Michigan Straits Route (Indian Trails)

| 350 | | Connecting Train Number | | | | 355 | |
|-------|--------|--------------------------------|--------------------------|-------|-------|-------|--|
| Daily | Mile | Days of Operation | Symbol | Daily | | | |
| | 0 | Kalamazoo, MI—Amtrak Sta. (ET) | ●♿QR | Ar | 8:40P | | |
| | 11:50A | 27 | Battle Creek, MI | ●♿QR | | | |
| | 3:50P | 127 | Alma, MI (DART terminal) | ○♿ | Dp | 5:00P | |
| | 4:26P | 146 | Mt Pleasant, MI | ○♿ | | 4:30P | |
| | 5:15P | 165 | Clare, MI | ○♿ | | 3:45P | |
| | 5:50P | 201 | Houghton Lake, MI | ○♿ | | 2:30P | |
| | 6:25P | 226 | Springing, MI | ○♿ | | 2:00P | |
| | 6:55P | 254 | Gaylord, MI (ET) | ○♿ | Dp | 1:20P | |

NOTE—change of buses required en route at Lansing

Hancock • L'Anse • Marquette • Milwaukee • Chicago (Indian Trails)

| 8532 | | Thruway Number | | | | 8539 | |
|--------|------|--------------------------------|--------|-------|--------|------|--|
| Daily | Mile | Days of Operation | Symbol | Daily | | | |
| 10:55P | 0 | Hancock, MI (CT) | ○ | Ar | 7:54A | | |
| 11:02P | 1 | Houghton, MI | ○ | | 7:47A | | |
| 12:01A | 34 | L'Anse, MI | ○ | | 6:52A | | |
| 1:35A | 102 | Marquette, MI | ○ | | 5:20A | | |
| 4:10A | 160 | Escanaba, MI | ○ | | 3:50A | | |
| 4:50A | 182 | Marinette, MI | ○ | Ar | 12:54A | | |
| 5:24A | 195 | Oconto, MI | ○ | | 11:55P | | |
| 6:15A | 212 | Green Bay, WI | ○ | | 11:15P | | |
| 6:55A | 253 | Manitowoc, WI | ○ | | 10:35P | | |
| 7:30A | 276 | Sheboygan, WI | ○ | | 10:00P | | |
| 8:45A | 328 | Milwaukee, WI—Amtrak Sta. (CT) | ●♿QR | Dp | 9:00P | | |

| 334 | | Connecting Train at Milwaukee | | | | 339 | |
|--------|------|---------------------------------|--------|-------|-------|-----|--|
| Daily | Mile | Days of Operation | Symbol | Daily | | | |
| 11:00A | 0 | Milwaukee, WI—Amtrak Sta. (CT) | ●♿QR | Ar | 6:45P | | |
| 11:10A | 8 | Milwaukee Airport Rail Sta., WI | ○♿QR | | 6:28P | | |
| 11:23A | 23 | Sturtevant, WI | ○♿QR | | 6:14P | | |
| 12:01P | 68 | Glenview, IL | ○♿ | | 5:32P | | |
| 12:29P | 86 | Chicago, IL—Union Station (CT) | ●♿QR | Dp | 5:08P | | |

Port Huron • Detroit (Hoosier Ride)

| 350 | | Connecting Train Number | | | | 355 | |
|-------|--------|-------------------------|---------------------|--------|-------|-------|--------|
| Daily | Daily | Mile | Days of Operation | Symbol | Daily | Daily | |
| 3:10P | 8:10A | 0 | Detroit, MI (CT) | ●♿QR | Ar | 6:55P | 12:55P |
| 3:40P | 8:40A | 18 | Roseville, MI | ○ | | 6:45P | 12:45P |
| 3:55P | 8:55A | 26 | Mt. Clemens, MI | ○ | | 6:30P | 12:30P |
| 4:15P | 9:15A | 40 | New Baltimore, MI | ○ | | 6:10P | 12:10P |
| 4:45P | 9:45A | 63 | Marysville, MI | ○ | Ar | 5:40P | 11:40A |
| 5:00P | 10:00A | 69 | Port Huron, MI (CT) | ○ | Dp | 5:25P | 11:25A |

SYMBOLS KEY

- ✈ Airport connection
- QR Quik-Trak self-serve ticketing kiosk
- Unstaffed station
- Station with ticket office; may or may not be open for all train departures.
- ♿ Station wheelchair accessible; no barriers between station and train.
- ♿ Station wheelchair accessible; not all station facilities accessible.

SHADING KEY

Thruway and connecting services

See page 2 for Services and Route Map.